

DATA: ROOM FOR IMPROVEMENT

Diane Pendleton RN-BSN
Chief Nursing and Quality Officer
FamilyCare Health Center

HOW ABOUT A CHRONIC PAIN REGISTRY?

Where do we start?

- PROVIDER INVOLVEMENT
- CHOOSE MEASURES
- SPECIFIC PROCEDURE TRAINING
FOR ALL PLAYERS
- MONTHLY REPORTING

IMPORTANT MEASURES

- PAIN AGREEMENTS (CSA)
- BOARD OF PHARMACY REPORTS
- URINE TOX SCREENS
- IMAGING/OLD RECORDS ON FILE
- SUPPORTING DIAGNOSIS

Examples of Reports

PECS Registry Report List	
Report List - 5/24/2010 3:00:51 PM	
<u>Report Name</u>	<u>Category</u>
CHRONIC PAIN PATIENTS LIST	General
CHRONIC PAIN PTS CSA	General
CHRONIC PAIN PTS URINE TOX	General
CHRONIC PAIN WITH SUPPORTING DX	General
CHRONIC PAIN WITH SUPPORTING DX fibromyalgia	General
CHRONIC PAIN WITH IMAGING OR RECORDS	General
CHRONIC PAIN PTS WITH BOARD OF PHARMACY	General
COMMITTEE PEER REVIEW	General
CHRONIC PAIN PT'S NEEDING A BOARD OF PHARMACY	General
CHRONIC PAIN PTS NEEDING A CSA	General
CHRONIC PAIN PTS NEEDING A PEER REVIEW	General
CHRONIC PAIN PTS NEEDING IMAGING OR RECORDS	General
CHRONIC PAIN PTS NEEDING SUPPORTING DX	General
CHRONIC PAIN PTS NEEDING URINE TOX	General

CHRONIC PAIN REGISTRY

May-10

SITES	Goal	TV	Patrick St	SFEC	Madison	Total
# of Patients		414	111	110	367	1002
Pain Agreement (CSA)	100%	93%	75%	99%	74%	85%
Board of Pharmacy (every 6 months)	>90%	52%	72%	70%	74%	64%
Urine Tox Screen (yearly & PRN)	>90%	43%	45%	78%	26%	41%
Supporting Diagnosis	100%	98%	86%	74%	97%	94%
Imaging/Records Date	>75%	75%	59%	69%	82%	75%

Provider Chronic Pain Registry

PROVIDERS	Goal	Jenkins	Miller	Keeney	Blackwell	Montalto	Dressler	Frazer
# of Patients		93	30	5	103	6	104	119
Pain Agreement (CSA)	100%	96%	93%	40%	93%	100%	99%	96%
Board of Pharmacy (every 6 months)	>90%	85%	70%	67%	67%	50%	71%	47%
Urine Tox Screen (yearly & PRN)	>90%	37%	27%	40%	18%	67%	80%	54%
Supporting Diagnosis	100%	99%	100%	100%	99%	67%	74%	95%
Imaging/Records Date	>75%	87%	87%	60%	73%	67%	70%	82%

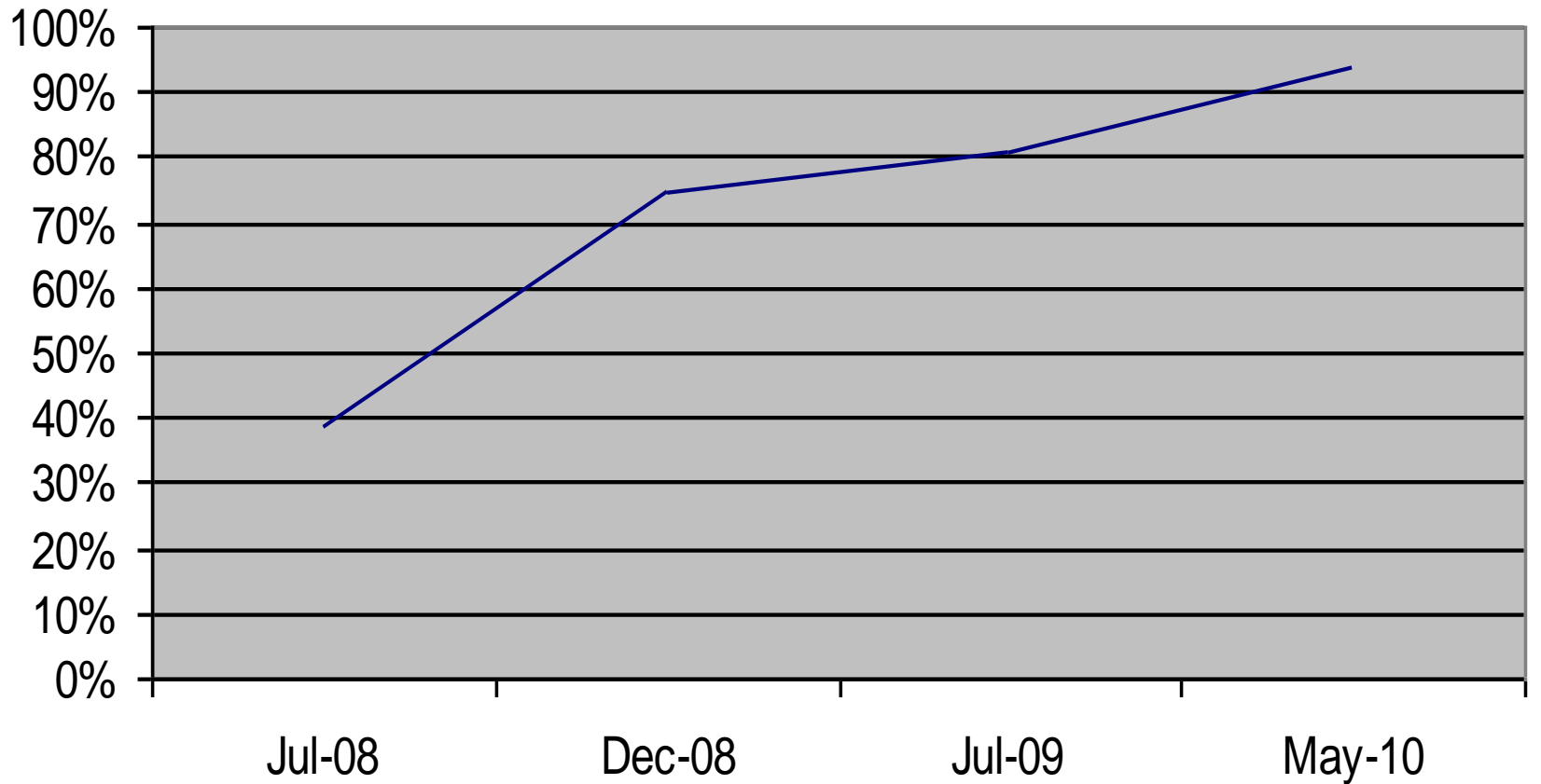
QUALITY IMPROVEMENTS

- Updated our Pain Agreement
- Educational Handouts created
- Added on-site Urine Drug Screening
- Procedures for prescription refills, UDS collection, and discharge policy updated-pt/staff well informed

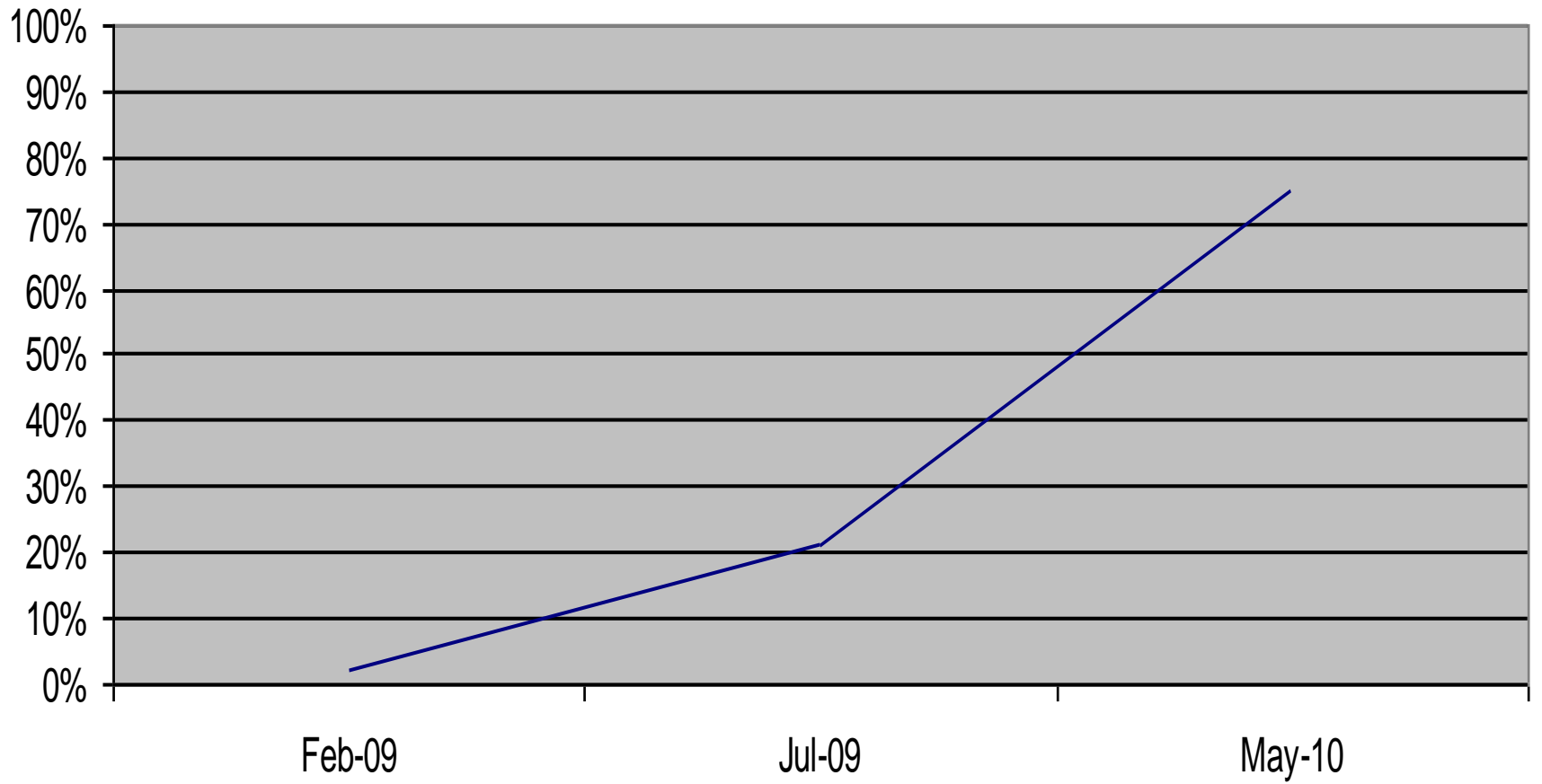
[QUALITY IMPROVEMENTS cont]

- Family Practitioner certified in Suboxone treatment
- Improved Documentation of care in the medical record
- Developed triage protocol for new patients
- Safe and Consistent care

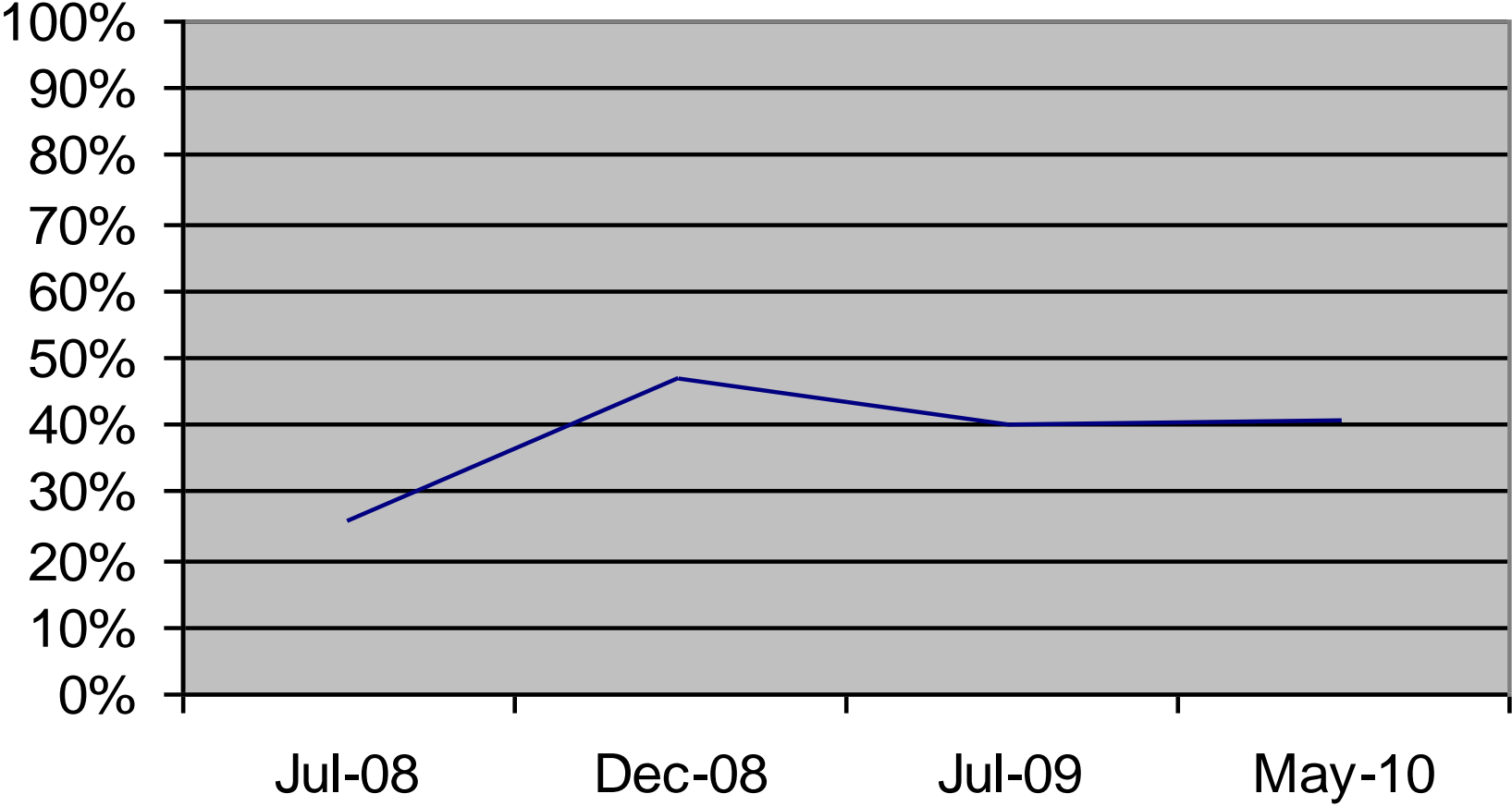
Supporting Diagnosis



Imaging/Old Records



Urine Tox Screen



Revisit the Why...

- IMPROVE CARE
- MEET THE NEEDS OF OUR CUSTOMERS
- TO HAVE A SUCCESSFUL PRACTICE